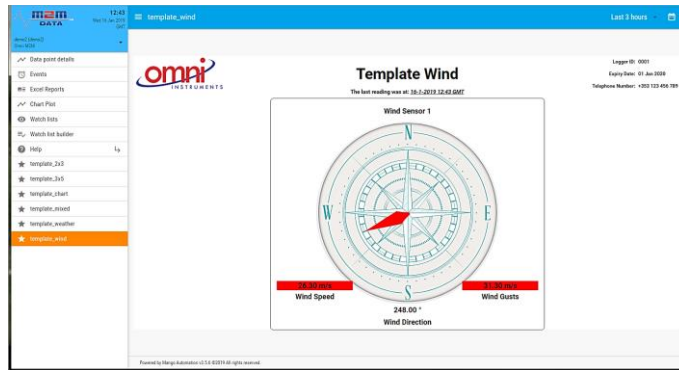
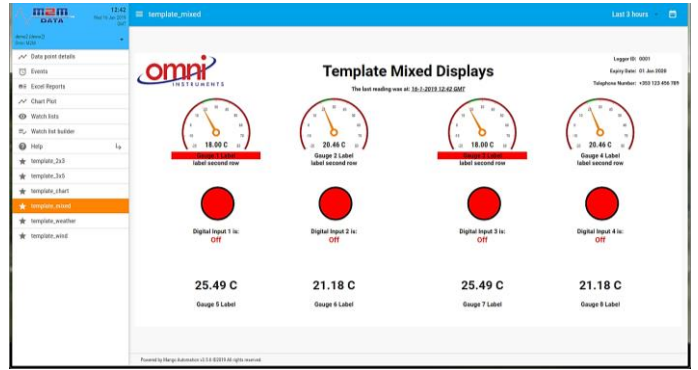
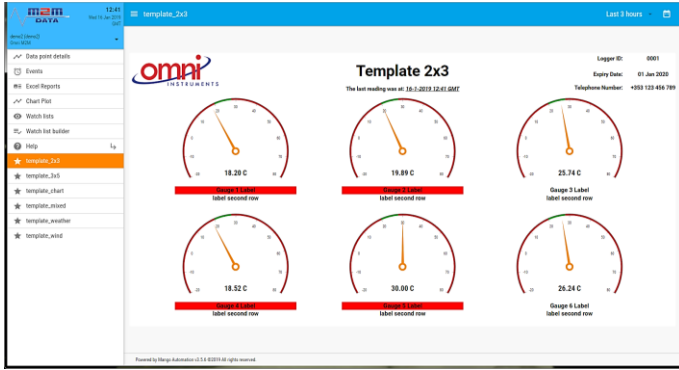


M2M Data - Web Interface

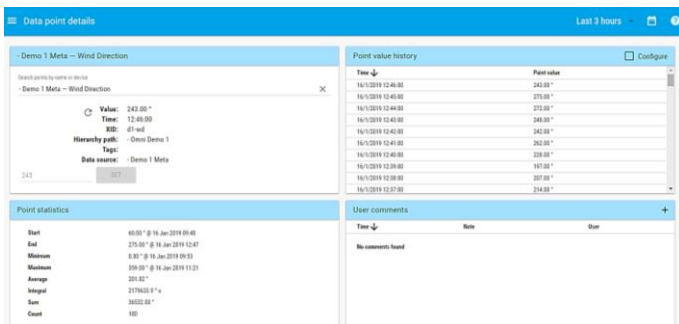
Data from several GPRS and Ethernet logging units can be viewed on the M2M web interface in chart, table and graphical format. The data can also be downloaded as a CSV file or as an Excel spreadsheet. The web interface provides a data panel where customers can view a customised web interface showing data from all their remote locations. The channel scaling, reports, alarm levels, and alarm recipients are set from our web control page removing the need to dial up units or visit sites for reprogramming.

On first logging in to the site: www.m-2-m.com you will see a graphical display showing the data from your remote units. The graphical display can be customised to your specifications. Here are a few examples of the displays we can create:



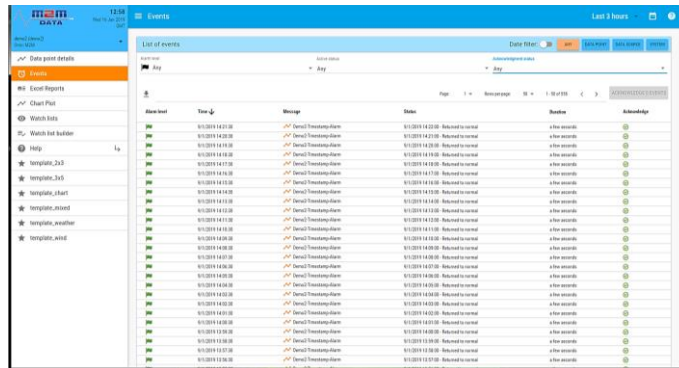
The various data panels are accessible from the menu down the left hand side of the web page.

The Data Point Details page shows details of the data from each channel of the data logger. The details include the latest reading details, statistics and recent history over a selectable time period. The page also shows a graph with the ability to select the time period displayed as well as the ability to download the historical data to CSV or Excel formats. This page will also display any recent alarms.



M2M Data - Web Interface

The Events page will provide details of any active alarms and give the ability to search for previous alarms. You will be able to acknowledge the alarms and see the duration of the alarms as well as which user has acknowledged the alarms.



The Watch List page gives the ability to see several data points simultaneously to give an overall system picture. This page also provides a graph that can have several data points charted simultaneously for data comparison.



The Excel Reports page allows the user to create, schedule and send customised reports from the M2M system. You can regularly send the historical data or other system information to an email address.

