

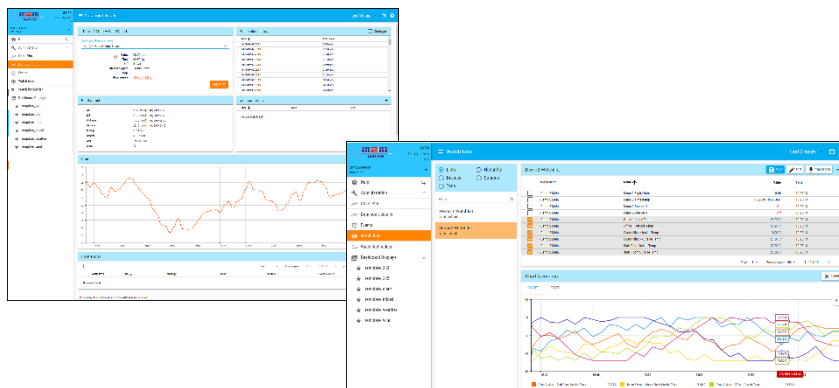
Data from several logging units can be viewed on the M2M web interface in chart, table and graphical format. The data can also be downloaded as a CSV or XLSX file. The web interface provides a data panel where customers can view a customised web page showing data from all their remote locations.

Go to <http://www.m-2-m.com> to see the M2M Message Board. Follow the instructions on screen to view a demonstration of the M2M service.

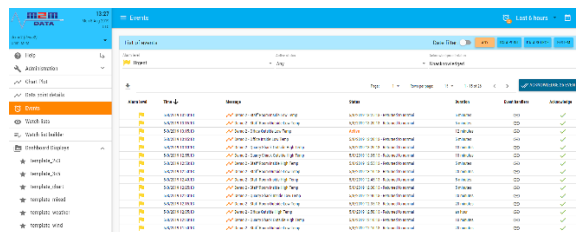
The M2M service has customisable graphics displays with a menu list down the left-hand side of the web page.



The M2M Service allows analysis of a single data point via the Data Points page or multiple data points via the Watchlist page.



An Alarms page will provide details of any active alarms and give the ability to search for previous alarms. You will be able to acknowledge the alarms and see the duration of the alarms.



An Excel Reports page allows the user to create, schedule and send customised reports from the M2M system. You can regularly send the historical data or other system information to an email address.

All data is stored in the cloud on a dedicated web server and can be accessed from any internet capable device.